

Electrical Troubleshooting

Troubleshooting Flowchart (cont'd)

Self-diagnosis D4 indicator light blinks six times.

Turn the ignition switch ON.

Observe the A/T shift indicator and select each position separately.

Does the indicator light properly?

NO

See A/T shift position indicator inspection. (Section 23)

YES

Turn the ignition switch OFF.

Connect the Test Harness between the ECU and connectors.

Turn the ignition switch ON.

Shift to **R** position.

Measure the voltage between the A13 and A3/A4 terminals.

Is there voltage?

YES

Repair open in GRN/RED wire between the E13 terminal and the shift position console switch.

NO

Shift to **N** or **P** position.

Measure the voltage between the B7 and A3/A4 terminals.

Is there voltage?

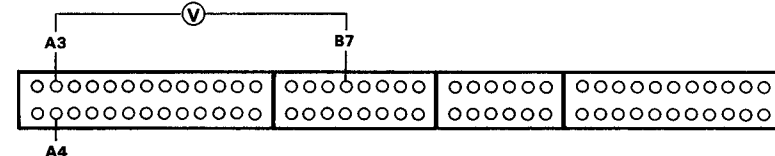
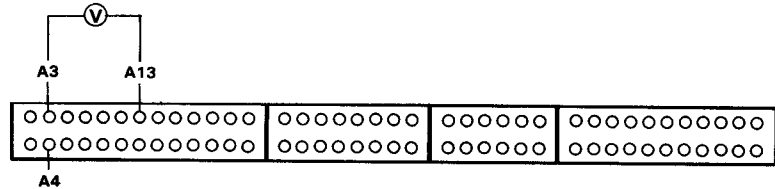
YES

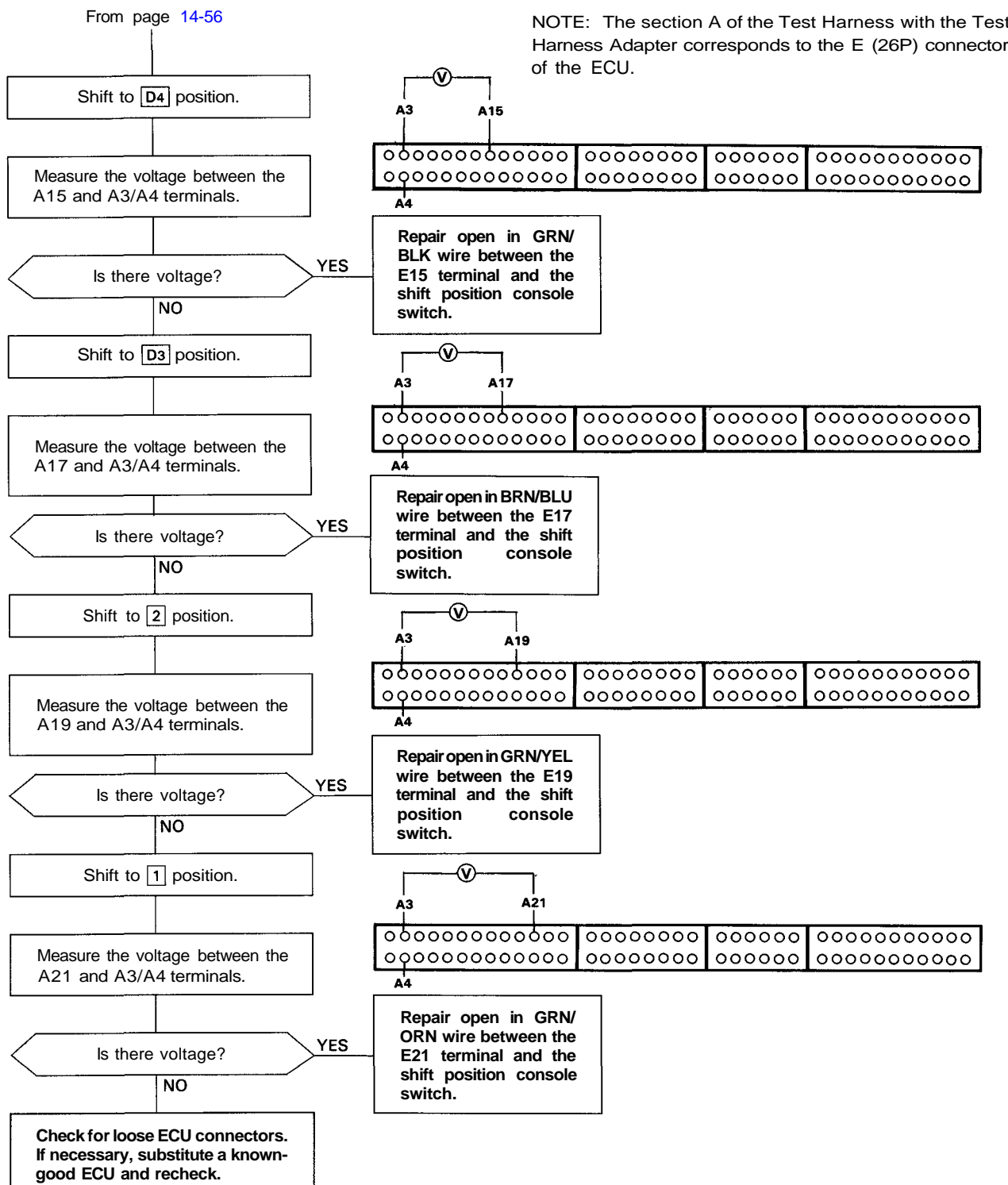
Repair open in LT GRN wire between the B7 terminal and the shift position console switch.

NO

To page 14-57

NOTE: The section A of the Test Harness with the Test Harness Adapter corresponds to the E (26P) connector of the ECU.





(cont'd)